

# CINCH<sup>®</sup>

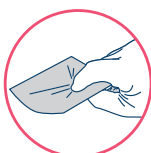
Tube Securement Device | 9F - 30F

## Patient Comfort First

CINCH<sup>®</sup> was designed with the most delicate skin in mind. Our hypoallergenic silicone adhesive provides a gentle yet secure attachment. The low-profile and flexible design of the CINCH<sup>®</sup> makes it comfortable and non-disruptive, even when it's not in use.

## Safe + Secure

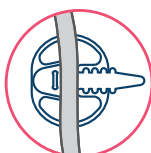
CINCH<sup>®</sup> promotes the health, safety, and comfort of patients by securely anchoring medical tubes while relieving stress and strain at insertion points.



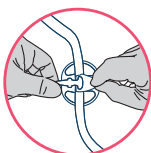
CLEAN



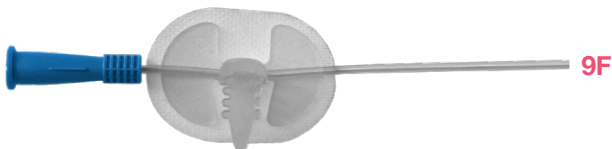
APPLY



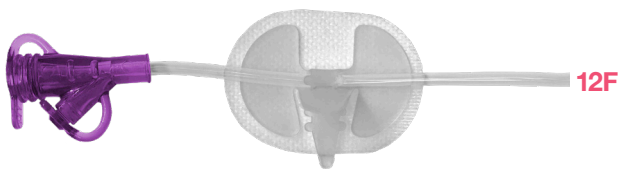
PLACE



SECURE



9F



12F



30F

**CAUTION:** If redness or irritation occurs, stop use and consult a healthcare professional. Do not over tighten. This document is not a substitute for the DFU (Directions for Use). IMAGES ARE NOT TO SCALE.



Innovating. Educating. Changing Lives.™

## New Standard of Care

Medical tubing doesn't have to slow you down. We've combined a soft and flexible silicone body with a breathable base material to give our patients comfort and mobility while holding their tubes securely in place.

### Comfortable

Soft, low-profile, flexible

### Versatile

Secures tubes 9F to 30F

### Breathable Backing

### Hypoallergenic

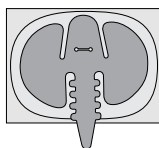
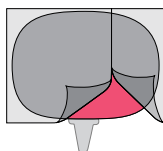
Gentle silicone adhesive

### Reusable

Elastomer strap can be repeatedly opened and closed

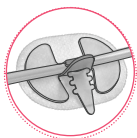
Back

Front



Device comes fully assembled with an easy-peel split plastic backing.

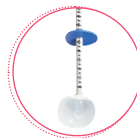
## AMT Accessories



CINCH®  
Tube Securement (10/box)  
**TSD0406-10**  
Tube Securement (50/box)  
**TSD0406-50**



AMT Clamp™ (10/box)  
**4-3000**



Balloon Stoma Measuring Device  
Guidewire Compatible (10/box)  
**1804**  
Non-Guidewire Compatible (10/box)  
**1704**

## Innovating. Educating. Changing Lives.™

For a complete list of products visit us at [www.AppliedMedical.net](http://www.AppliedMedical.net)

800 869 7382

CS@AppliedMedical.net



Applied Medical Technology, Inc.  
8006 Katherine Boulevard  
Brecksville, OH 44141  
[www.AppliedMedical.net](http://www.AppliedMedical.net)  
An ISO 13485 Registered Company