

# *Eclipse* 2L

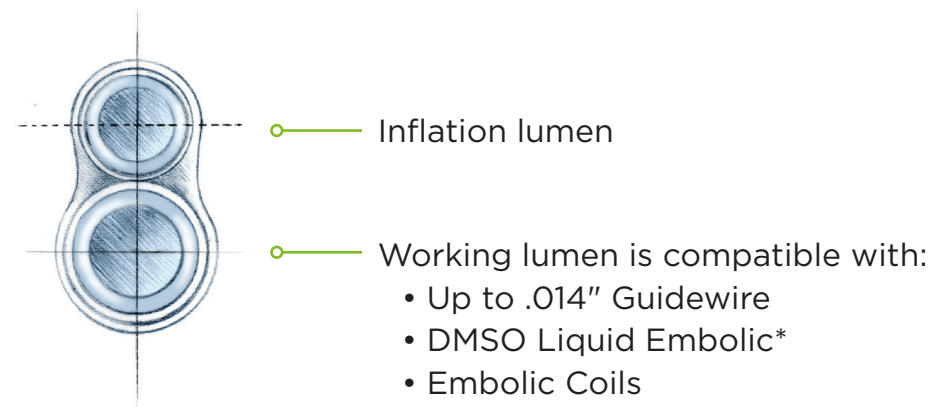
DUAL LUMEN BALLOON CATHETER



**Parallel Lumens.**  
**Unparalleled**  
**Performance.**

## Parallel Lumens.

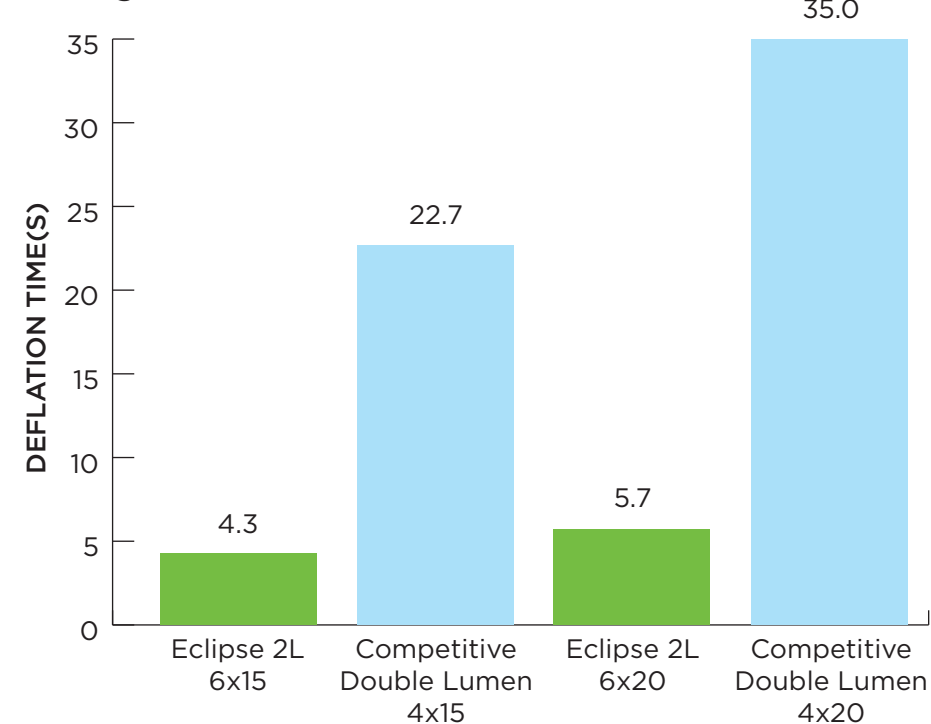
Parallel lumens provide a dedicated large inflation lumen and versatile dedicated working lumen while allowing for outstanding navigability



## Unparalleled Performance.

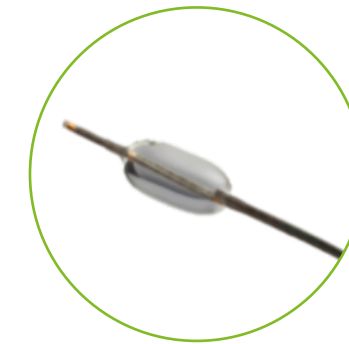
### 5x Faster Deflation and Outstanding Navigability

Average Deflation Time From 4 mm OD



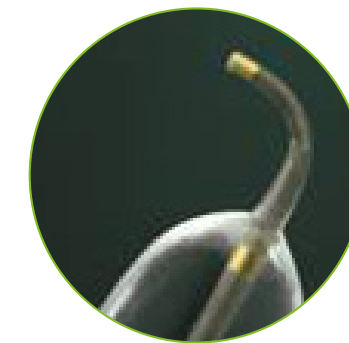
### Navigation to Distal Anatomy

Courtesy of Pr. Suleyman Men  
Eylul University Hospital - Izmir, Turkey



### Easy Valve Design

Designed for purging the air out of the balloon and to reduce the risk of blood aspiration while deflating the device

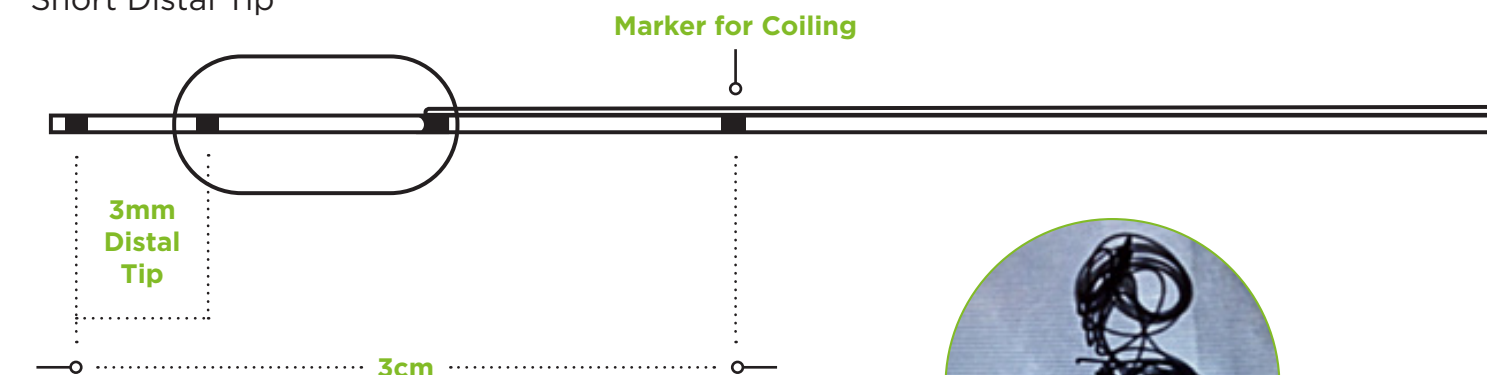


### Multi-Purpose Tip

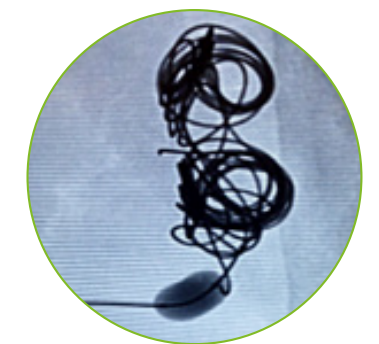
The 7mm distal tip is pre-shaped to assist in navigation to the target location

### Eclipse 2L 6x7 SN

Short Distal Tip

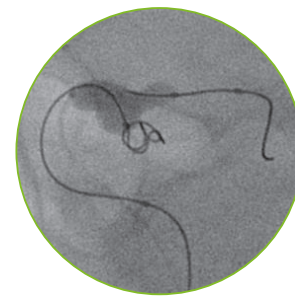


- A 3mm Short Nose option with 4 markers for coiling

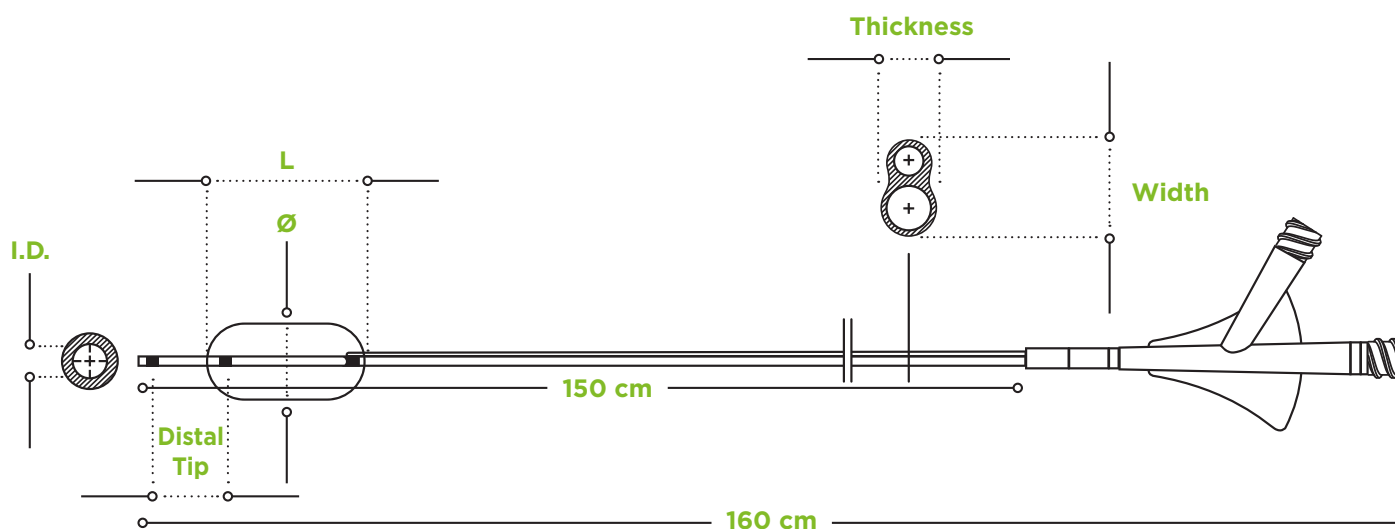


Courtesy of Pr Ozcan Ozdemir  
Osmangazi University Hospital - Eskisehir, Turkey

# Broad Range of Super Compliant Balloons for Diverse Clinical Applications



Courtesy of Pr. Suleyman Men  
Eylul University Hospital -  
Izmir, Turkey



REFERENCE	BALLOON (mm)			DISTAL TIP O.D. X LENGTH	I.D. (WORKING LUMEN)	DOUBLE LUMEN OUTER DIMENSIONS		DEAD SPACE
	MAXØ	L	INFLATION RANGE			THICKNESS	WIDTH	
ECL2L6x7SN	6	7	~2mm to 6mm	2.0F (.027") x 3mm	0.41mm/.016"	2.7F/.9mm/.035"	3.3F/1.1mm/.043"	0.30ml
ECL2L6x9	6	9		2.0F (.027") x 7mm				
ECL2L6x12	6	12						
ECL2L6x15	6	15						
ECL2L6x20	6	20						

## Compatibility

Guidewire: ≤ .014" • Guide Catheter: ≥ .055" ID

Guide Catheter for BAC: > .070" ID (dependent on coiling catheter OD)

For a list of indications, warnings, precautions and contraindications, refer to IFU-047.