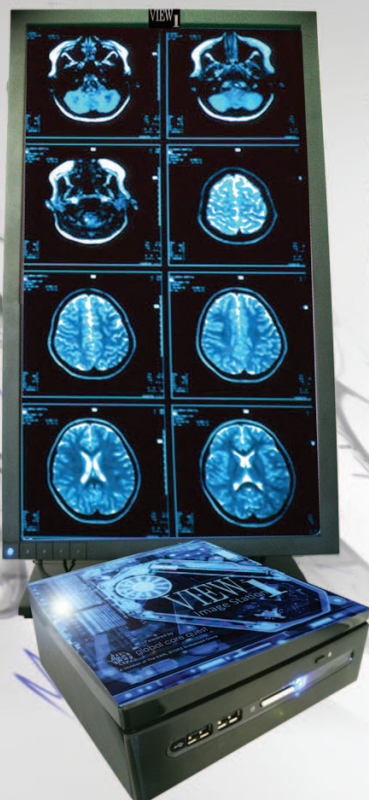


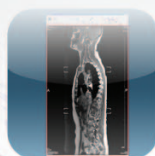
# VIEW<sup>1</sup><sup>TM</sup> Image Station

*visual clinical intelligence instantly through minimally invasive software*



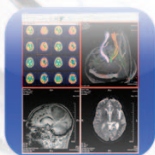
## Surgeon Ready....

The VIEW<sup>1</sup><sup>TM</sup> Image Station<sup>TM</sup> is a universal medical image reader/viewer that accepts a variety of media types and input sources to provide virtually instant access to comprehensive study and series navigation.



### Hi-Res Imaging

Two mega-pixel monitor allows surgeon to view images with clarity. Monitor can be vertical or horizontal.



### Multi-Tile Interface

Thumbnails, single image tiles, and 3-D images can be manipulated simultaneously.

## Image Previewing

Preview and index the images from the Image Station<sup>TM</sup> securely on a portable device.



# SURGEON Connect™

visual clinical intelligence instantly through minimally invasive software

## Instant Access for Surgeons

Relevant patient data is displayed prior to case start and throughout the surgical process. SurgeonConnect™, coupled with the VIEW1™ Image Station™, enables viewing, sharing, and collaboration.



## Portable Information

The VIEW1™ portability solution allows surgeons to review previously diagnosed images and clinical information wirelessly. Designed specifically to enable surgeons to index and organize images.

### Featured innovations:



#### Storage

Capacity for 1.5 million typical medical images. Integrated server for medical imaging.



#### Imaging\*

Access all CT, MRI, X-ray, Ultra-sound imaging from anywhere: hospital, clinic, or portable.



#### Quick Lists

Pre-identified patient list for surgeons to view images.



#### Connect

Image access to all integrated VIEW1™ Image Stations, hospital workstations, OR's, and portable devices.



*\*Not available for primary diagnostic use*

*\*iPad is a trademark of Apple, Inc. SS-511001*