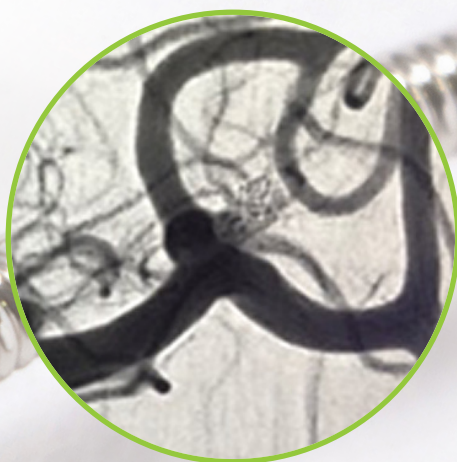


PTIMAX

DELIVERS



VOLUME

PART OF THE



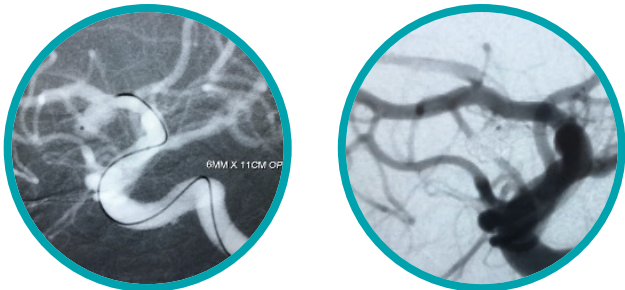
OPTIMAX DELIVERS

CONFIDENCE

- Delivers **greater volumetric fill** over a traditional 10 system coil, now with a large volume Super Soft Coil
- Delivers the broadest and most complete offering of sizes in a large volume coil
 - Super Soft**, Soft and Standard* offerings in **Complex and Helical**
 - 1mm and 1.5mm Complex large volume coils**
 - Half sizes** (1.5, 2.5, 3.5, and 4.5mm offerings) and multiple lengths available in most diameters
- Delivers the softness, stability, and reliability of the Optima Coil System
 - Unique open loop configuration
 - Unparalleled distal pusher softness
 - Highly reliable detachment in an instant



A ruptured 4mmx4mm ICA aneurysm treated by a Southeast Physician. The aneurysm was framed with a 4mm x 4cm OptiMAX Complex Soft, followed by a 2mm x 4cm OptiMAX Complex Super Soft and a 1.5mm x 2cm OptiMAX Super Soft. Physician noted that the microcatheter remained stable throughout the case and was able to complete the case with fewer coils to achieve a good outcome.



50-year-old female with an 9mm unruptured oblong ICA aneurysm treated by a West Coast physician. Utilized a 6mm x 11cm OptiMAX Soft to frame, followed by 3 additional OptiMAX coils. The coil was able to provide a stable frame the aneurysm without compartmentalizing. This created a stable basket to deploy three more large volume coils and occlude the aneurysm.

*Labeled as Optima Complex 18

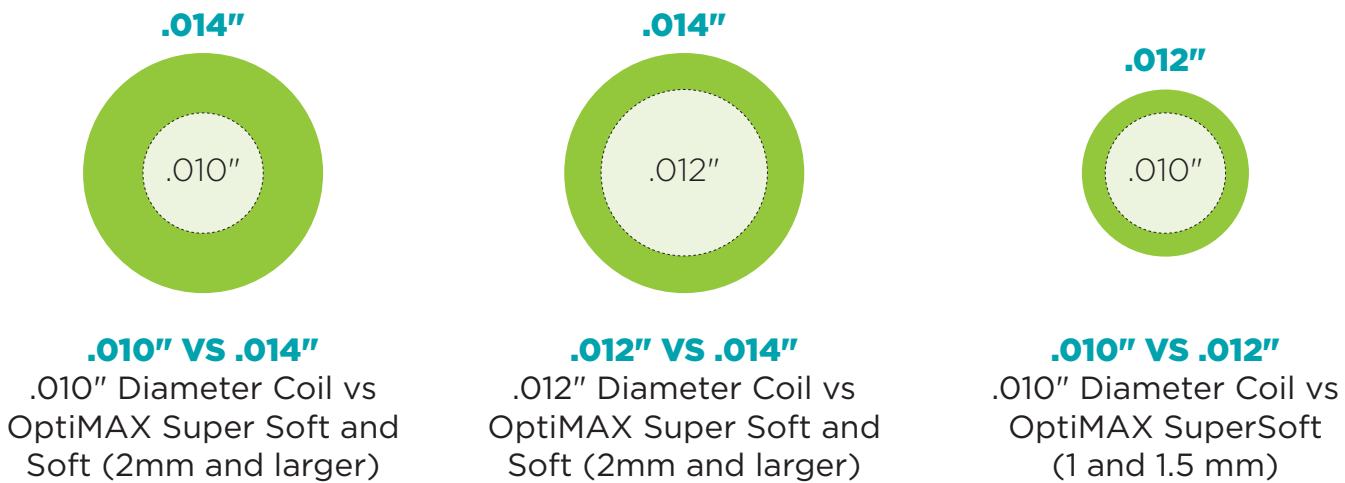
OPTIMAX DELIVERS

VOLUME

	.010" Diameter Coil	.011" Diameter Coil	.012" Diameter Coil
OptiMAX Super Soft 1-1.5mm (.012")	44% volume increase	19% volume increase	OPTIMAX
OptiMAX SuperSoft and Soft 2mm and above (.014")	96% volume increase	62% volume increase	36% volume increase

All OptiMAX coils are compatible with a ≥.0165" coiling catheter

PACKING VOLUME INCREASE*



*Percentage increase in volumetric filling per cm of length with OptiMAX vs other 10-system coils

Ordering Information

Complete offering with a full range of Complex and Helical coils in Super Soft, Soft and Standard* configurations to provide options in any clinical scenario.

MODEL NO.	IMPLANT SIZE
-----------	--------------

OPTIMAX COMPLEX SUPER SOFT

OPTI0101CSSMX	1mm x 1cm
OPTI0102CSSMX	1mm x 2cm
OPTI0103CSSMX	1mm x 3cm
OPTI0152CSSMX	1.5mm x 2cm
OPTI0153CSSMX	1.5mm x 3cm
OPTI0202CSSMX	2mm x 2cm
OPTI0203CSSMX	2mm x 3cm
OPTI0204CSSMX	2mm x 4cm
OPTI0206CSSMX	2mm x 6cm
OPTI2525CSSMX	2.5mm x 2.5cm
OPTI0255CSSMX	2.5mm x 5cm
OPTI0303CSSMX	3mm x 3cm
OPTI0307CSSMX	3mm x 7cm
OPTI0310CSSMX	3mm x 10cm
OPTI3535CSSMX	3.5mm x 3.5cm
OPTI0355CSSMX	3.5mm x 5cm
OPTI0358CSSMX	3.5mm x 8cm

OPTIMA COMPLEX 18*

OPTI0510COM18	5mm x 10cm
OPTI0620COM18	6mm x 20cm
OPTI0724COM18	7mm x 24cm
OPTI0827COM18	8mm x 27cm
OPTI0930COM18	9mm x 30cm
OPTI1034COM18	10mm x 34cm
OPTI1137COM18	11mm x 37cm
OPTI1240COM18	12mm x 40cm
OPTI1343COM18	13mm x 43cm
OPTI1447COM18	14mm x 47cm
OPTI1550COM18	15mm x 50cm
OPTI1655COM18	16mm x 55cm
OPTI1860COM18	18mm x 60cm
OPTI2065COM18	20mm x 65cm
OPTI2265COM18	22mm x 65cm
OPTI2465COM18	24mm x 65cm

MODEL NO.	IMPLANT SIZE
-----------	--------------

OPTIMAX COMPLEX SOFT

OPTI0404CSFMX	4mm x 4cm
OPTI0407CSFMX	4mm x 7cm
OPTI0410CSFMX	4mm x 10cm
OPTI0413CSFMX	4mm x 13cm
OPTI4545CSFMX	4.5mm x 4.5cm
OPTI4510CSFMX	4.5mm x 10cm
OPTI0507CSFMX	5mm x 7cm
OPTI0510CSFMX	5mm x 10cm
OPTI0517CSFMX	5mm x 17cm
OPTI0611CSFMX	6mm x 11cm
OPTI0615CSFMX	6mm x 15cm
OPTI0620CSFMX	6mm x 20cm
OPTI0715CSFMX	7mm x 15cm
OPTI0720CSFMX	7mm x 20cm
OPTI0820CSFMX	8mm x 20cm
OPTI0830CSFMX	8mm x 30cm
OPTI0930CSFMX	9mm x 30cm
OPTI1040CSFMX	10mm x 40cm

MODEL NO.	IMPLANT SIZE
-----------	--------------

OPTIMAX HELICAL SUPER SOFT

OPTI0101HSSMX	1mm x 1cm
OPTI0102HSSMX	1mm x 2cm
OPTI0103HSSMX	1mm x 3cm
OPTI1515HSSMX	1.5mm x 1.5cm
OPTI0153HSSMX	1.5mm x 3cm
OPTI2525HSSMX	2.5mm x 2.5cm
OPTI0255HSSMX	2.5mm x 5cm
OPTI0315HSSMX	3mm x 15cm

OPTIMAX HELICAL SOFT

OPTI0420HSFMX	4mm x 20cm
OPTI0520HSFMX	5mm x 20cm
OPTI0620HSFMX	6mm x 20cm
OPTI0720HSFMX	7mm x 20cm
OPTI0830HSFMX	8mm x 30cm
OPTI0930HSFMX	9mm x 30cm
OPTI1040HSFMX	10mm x 40cm

*Labeled as Optima Complex 18

For a list of indications, warnings, precautions, and contraindications, refer to IFU-057.

Balt USA

29 Parker, Irvine, CA 92618 • tel 949.788.1443 fax 949.788.1444 • balt-usa.com

Optima is a Trademark of Balt USA, LLC © 2020 BALT USA MKTG-200 Rev. A

