

IMAGE 1 :spies™

Your Link to Perfection



STORZ
KARL STORZ—ENDOSKOPE
THE DIAMOND STANDARD



IMAGE 1 SPIES™

KARL STORZ has always set milestones, particularly in endoscopic imaging. In 2007, we launched KARL STORZ IMAGE 1 HUB™ HD, the first FULL HD camera control unit specifically developed for endoscopy. Since that time, FULL HD has been the standard for camera systems in minimally invasive surgery. IMAGE 1 SPIES™ now once more sets standards in endoscopic imaging.

Modular and adaptable

An endoscopic camera system should be as multifaceted as the surgeries performed with it.

Like a construction set, the new IMAGE 1 SPIES™ can be adapted to the respective demands to offer users a system that is optimally tailored to their specific needs.

In addition, its modular design provides compatibility with future units as well as backward compatibility with nearly all existing 3-chip IMAGE 1 FULL HD camera heads. Many of the existing videoscopes can also be integrated via an adaptor.

3-chip FULL HD SPIES™ camera heads

The 3-chip FULL HD SPIES™ camera heads and video endoscopes for IMAGE 1 SPIES™ make the functionalities of SPIES™ available to users. Razor-sharp FULL HD images offer excellent visualization in brilliant quality for optimal medical imaging.



*Fluorescent Imaging (FI) camera pending 510(k) clearance, not for sale in the U.S.



STORZ PROFESSIONAL IMAGE ENHANCEMENT SYSTEM

Innovative visualization tools for surgery and diagnostics

SPIES™ CLARA

Good endoscopic images clearly represent details in bright as well as dark areas. SPIES™ CLARA supports this through appropriate illumination of each part of the endoscopic image. As a result, undesired overexposure and reflections are avoided while dark areas are simultaneously brightened.



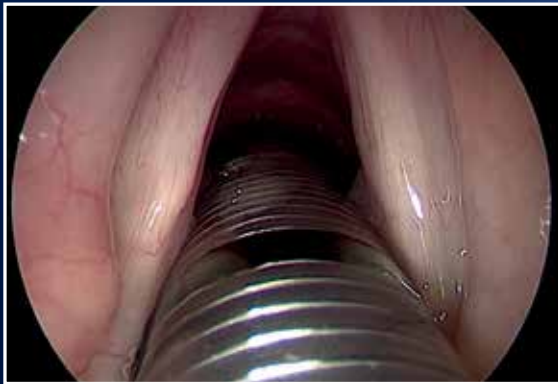
White light image



SPIES™ CLARA

SPIES™ CHROMA

Procedures become more efficient if tissue can be clearly differentiated. SPIES™ CHROMA intensifies color contrast in the image. Surface structures are further enhanced.



White light image

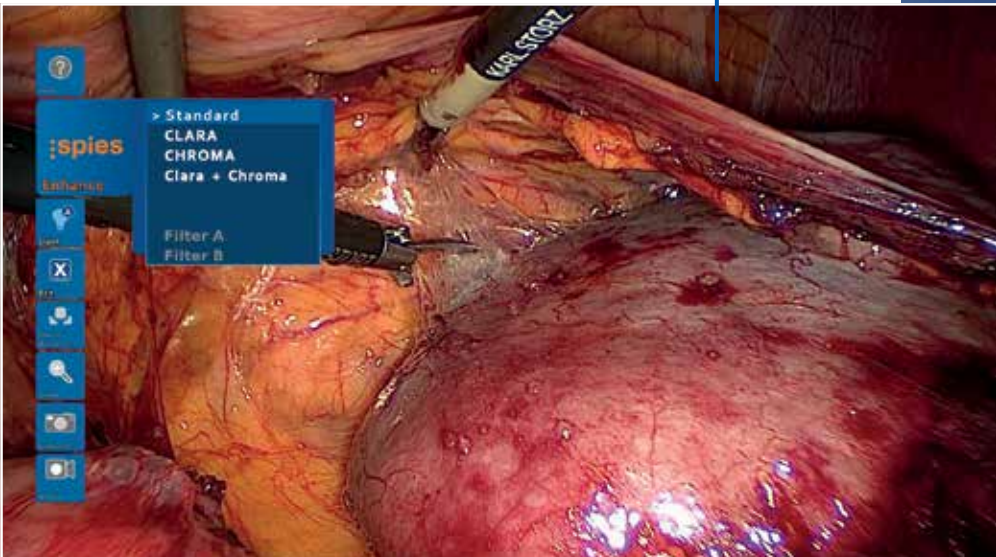


SPIES™ CHROMA

spies™

Menu structure

An overview presentation provides information about the current settings of the system. During surgery, they can be used to directly display and modify device and camera settings. Furthermore, all users can individually tailor their personal user interface.



Live menu



KARL STORZ Dashboard



Light Source Control (LSC)

Different anatomies require different amounts of light for optimal imaging. Heat development is minimized by the adjusted light levels.

The Light Source Control automatically controls the light source through the STORZ Communication Bus (SCB). The specific amount of light required is determined through the camera image, and this information is passed on to the light source. These results are used to control the illumination of the endoscopy field and to optimize the image. Heat development is minimized through adjusted light levels.



...evolution continues

STORZ
KARL STORZ—ENDOSKOPE

THE DIAMOND STANDARD

KARL STORZ GmbH & Co. KG
Mittelstraße 8, 78532 Tuttlingen, Germany
Postbox 230, 78503 Tuttlingen, Germany
Phone: +49 (0)7461 708-0
Fax: +49 (0)7461 708-105
E-Mail: info@karlstorz.de
www.karlstorz.com

KARL STORZ Endoscopy-America, Inc.
2151 East Grand Avenue
El Segundo, CA 90245-5017, USA
Phone: +1 424 218-8100
Phone toll free: 800 421-0837 (US only)
Fax: +1 424 218-8525
Fax toll free: 800 321-1304 (US only)
E-Mail: info@ksea.com



Health
made in Germany

www.health-made-in-germany.com