



Company Overview

Company Facts

BodyPartChart™, a Fathead® wall graphics company, provides healthcare companies, facilities, and education centers a cutting edge, self-adhesive vinyl product line that transforms patient and office environments.

- ❖ **Bold, oversized, free-form anatomical chart wall graphics, legal notifications, hospital signage, and more:**
 - **Amazingly realistic and detailed**
 - **Made with repositionable, high-quality vinyl**
 - **Easy to apply to smooth surfaces**
 - **Dry-erasable**
- ❖ **An educational resource tool for:**
 - **Hospitals**
 - **Doctors' offices**
 - **Medical schools and university settings**
 - **Elsewhere in the medical field**
- ❖ **The perfect tool to help initiate patient conversation and grow the doctor-patient relationship**

What We Offer

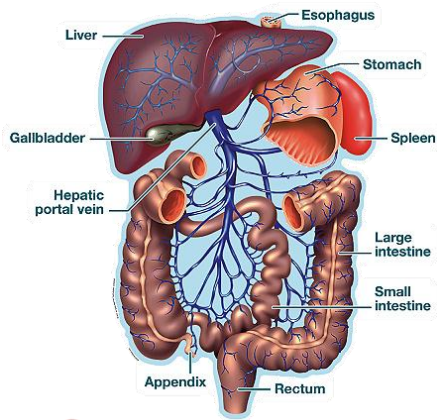
All products are **peel and stick, self-adhesive, dry erase capable, movable, reusable, completely safe for all smooth surfaces**, and offered in various sizes. They even pass flammability tests. Our products include:

- ❖ Anatomical images
- ❖ Medical signs
- ❖ Device skins (laptops, iPads, etc.)
- ❖ Legal notices
- ❖ Regulatory signage
- ❖ Public health notifications/tips
- ❖ Identity branding signage
- ❖ Marketing communication
- ❖ Building safety signs
- ❖ Billing policy notices
- ❖ Warning/caution signs
- ❖ Dry erase white boards
- ❖ **Custom graphics – use your artwork or customize our existing graphics!**

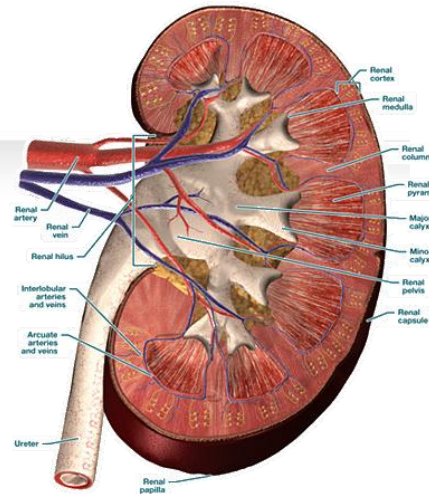
Easy to Apply and Dry-Erasable!



Anatomy Image Examples



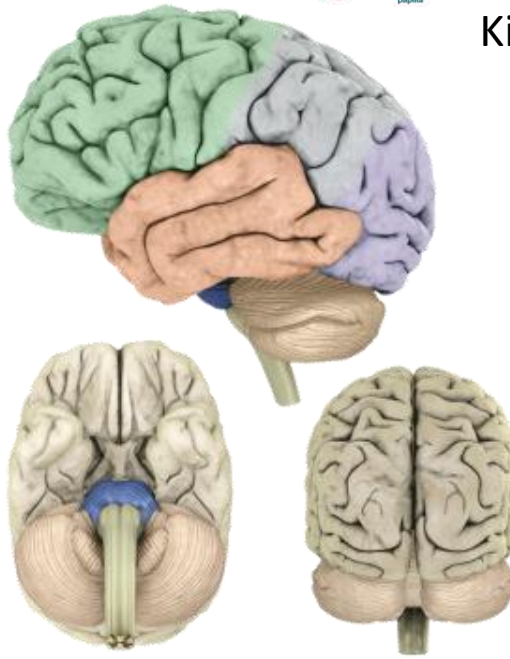
Hepatic Portal System



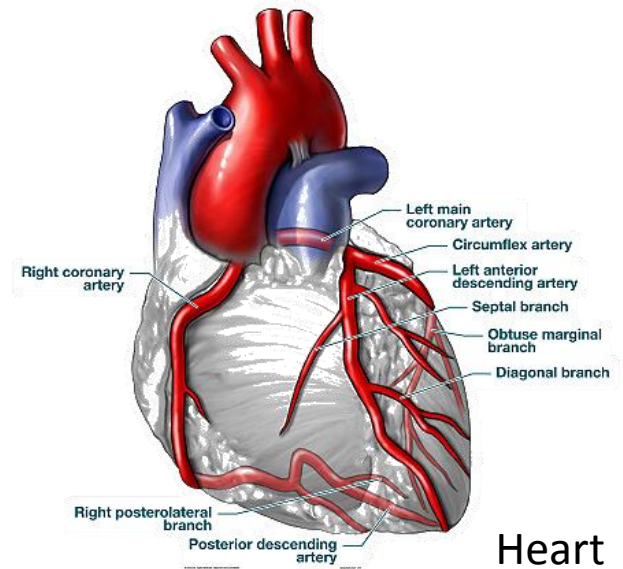
Kidney



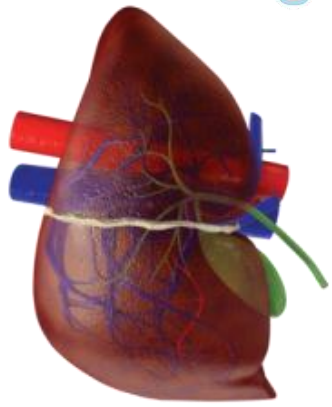
Lungs



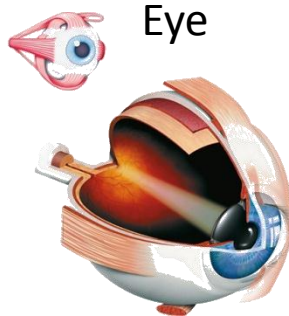
Brain



Heart

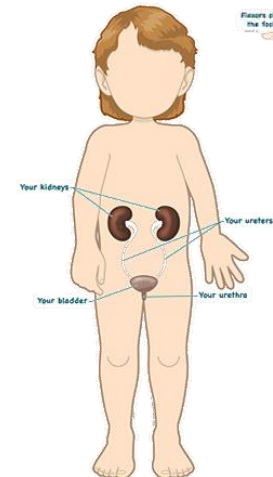
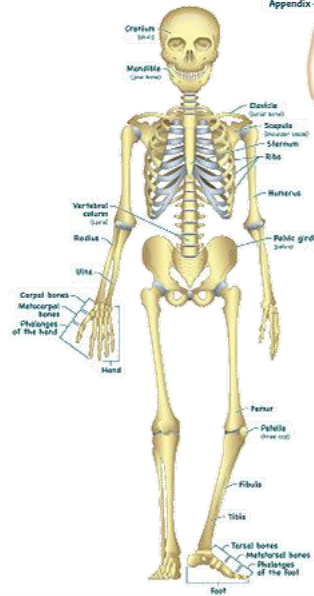
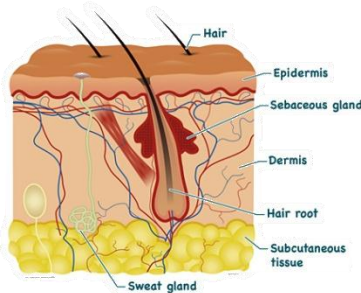
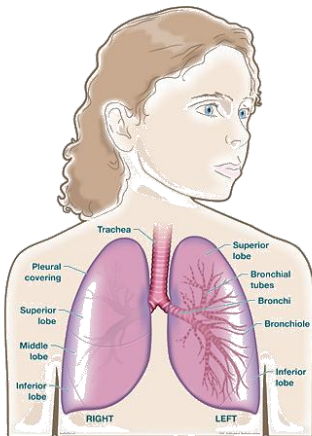
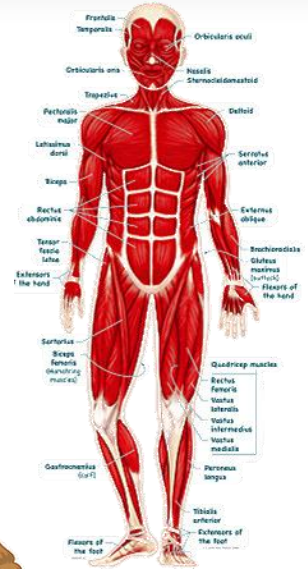
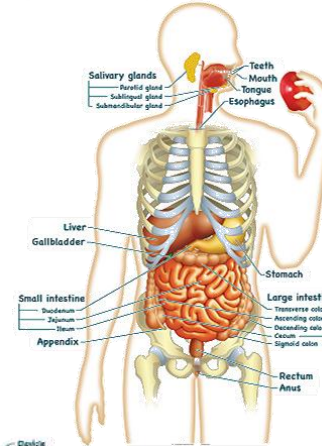
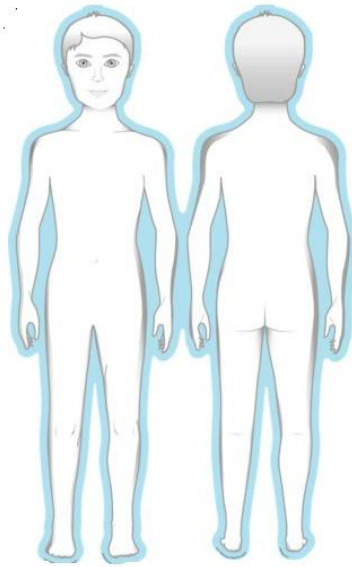
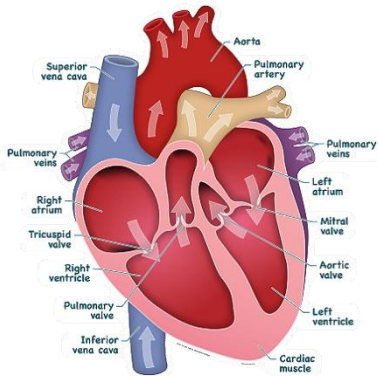


Liver

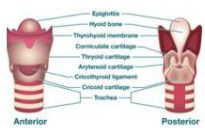
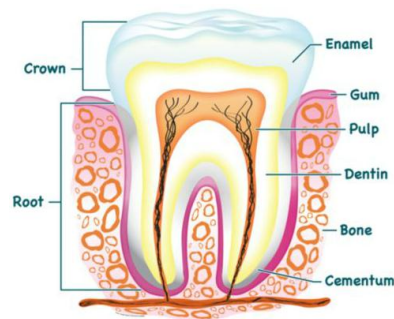
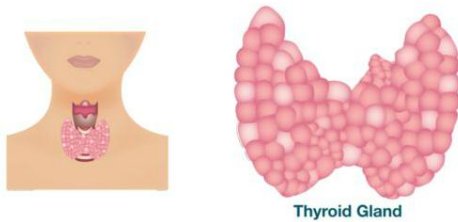
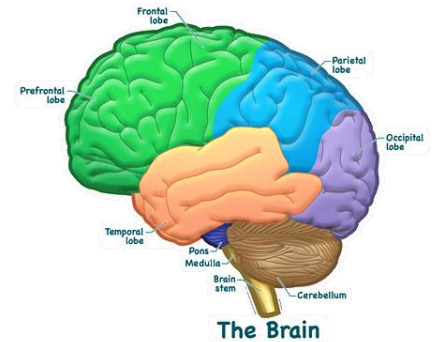
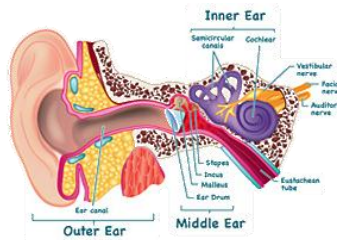
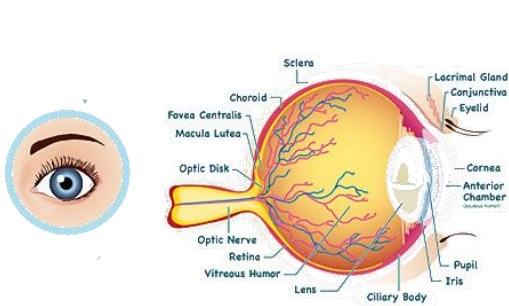


Eye

Anatomy Images – Simplified for Children



Anatomy Images – Simplified for Children Continued



Simplified Images Continued



About Me Poster -
Dry Erase



About Me Poster -
Dry Erase...



Activity Board -
Series



Baby Crawling -
Labeled



Pain Intensity Scale -
Sign



Children's Daily
Schedule



Children's Quiet
Please - Sign



Children's Wash
Hands - Sign



Goal Thermometer



Periodic Table of the
Elements



Good Tooth - Bad
Tooth



Growth Chart



Kitten - Labeled



My Face - Labeled



Periodic Table of the
Elements...

Hospital Sign Examples



“No Children Under 18” Sign



“Children’s Daily Schedule” Dry Erase Sign



“Help Protect Our Patients” Sign

Looking to create something from your artwork or brand one of our images? Let us create it with custom graphics!

**Beaumont Hospital
“Beau the Bear”**



Beaumont UHC Award Banner



**St. John's Providence Hospital
“Call Don't Fall Remote” Sign**



Advantages of Using BodyPartChart

- ❖ **Graphics are easier to install with no damage to walls – no tacks, nails, tape, or framing required – just peel and stick.**
- ❖ **Product is movable and reusable**
- ❖ **Passes fire safety code** (supporting documentation provided by independent firm)
- ❖ **Won't tear, fade, or yellow like paper**
- ❖ **More professional appearance and sanitary**

Thank you for your consideration!

**For more information or to see all currently available images,
please visit www.bodypartchart.com**

or contact

Andrew Luckoff

Vice President, Sales & Business Development

Office: (313) 373-6082

Mobile: (313) 590-3645

andrewluckoff@bodypartchart.com