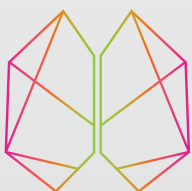




BE VERSATILE...
TRACKABILITY WITH MORE
DURABILITY AND MORE
COMPATIBILITY*



CERENOVUS

PART OF THE *Johnson & Johnson* FAMILY OF COMPANIES

**CERENOVUS
LARGE BORE
CATHETER**

BE VERSATILE...



TRACKABILITY

RAPID NAVIGATION to the MCA based on **OPTIMAL DESIGN**

FEATURES:

- Variable braid density
- Seamless transitions
- Soft, rounded tip

MORE DURABILITY

DURABLE DESIGN for MULTIPLE PASSES

FEATURES:

- Durable tip design
- Optimized distal column strength
- Excellent kink resistance in thin wall design

MORE COMPATIBILITY

LOWEST PROFILE in a large bore catheter for base catheter **COMPATIBILITY OPTIONS**.

FEATURES:

- Large ID of **0.071"**
- Lowest OD profile in a \geq **0.070"** ID catheter
- Compatible with $> 0.085"$ ID base catheter

ID **0.071"**

Available in 125 and 132cm lengths

CERENOVUS LARGE BORE CATHETER



CERENOVUS Large Bore Catheter

| Product Code | Distal ID | Distal OD | Proximal OD | Guide Compatibility [cm] | Usable Length [cm] |
|--------------|-----------|-----------|-------------|--------------------------|--------------------|
| IC71125UG | 0.071" | 0.081" | 0.0825" | 6F | 125cm |
| IC71132UG | 0.071" | 0.081" | 0.0825" | 6F | 132cm |

To order contact customer service: Customer Service (800-255-2500 Option 1)

Legal Manufacturer:
Medos International Sàrl
Chemin-Blanc 38, 2400
Le Locle, Switzerland

*More durability and compatability than Sofia® Plus, Ace™ 68, Jet™ 7, React™ 71 Catheters.
More durability than React™ 68 Catheter.

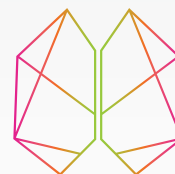
Important information: Prior to use, refer to the instructions for use supplied with this device for indications, contraindications, side effects, warnings and precautions.

Caution: US law restricts this device to sale by or on the order of a physician.

Not all products may currently be available in all markets.

The third party trademarks used herein are properties of their respective owners.

© CERENOVUS 2020. All rights reserved. 135484-200325



CERENOVUS
PART OF THE  FAMILY OF COMPANIES