

KARL STORZ GI SILVER SCOPE® Series

The Videoendoscopy System
for Gastroenterology



The KARL STORZ GI CCU HD

The KARL STORZ GI CCU is the core element in the field of gastroenterology: efficient, innovative, and brilliant. This innovation can be individually tailored to suit the requirements of the gastroenterology department and offers optimal performance in combination with the endoscopes of the GI SILVER SCOPE® series.

With its particularly fine color space calibration, the HD image quality of the GI CCU has been optimally adjusted to satisfy the requirements in the field of gastroenterology. Its connection via the KARL STORZ Communication Bus (SCB) ensures constantly optimal lighting in the maximum and minimum ranges.

The new KARL STORZ image port on the front enables simple connection and comfortable storage of image and video data on the supplied USB stick. The data is filed in JPG or MPEG4 format and can be processed further as required.



Special features:

- High definition HD, max. resolution 1080p
- Full screen image WIDE VISION
- Still image function (PiP)
- Individual contrast and brightness adjustment in 3 levels
- Automatic control of XENON 100 SCB light intensity
- White balance with save function
- Digital Zoom Function
- USB port on front panel for storing images and video sequences
- USB port on rear for connecting compatible USB printers
- Wide range of possible connections (DVI , HD-SDI, RGB, S-Video, Composite)
- Straightforward documentation via the AIDA system possible
- Maximum flexibility in the OR thanks to the possibility of complete integration in the KARL STORZ OR1® environment
- Flat, watertight keyboard

The KARL STORZ XENON 100 SCB Cold Light Source

For optimal illumination in every situation, the XENON 100 SCB is the logical component in your KARL STORZ gastroenterology system.

With its 100 Watt XENON lamp, this light source is perfectly coordinated to the endoscopes of the GI SILVER SCOPE® range and the GI CCU. The lamp's color spectrum correlates with the requirements of the CCD chip and the GI CCU in a unique way. The integrated, efficient insufflation pump ensures the necessary unfolding of the stomach or colon in order to create optimal conditions for diagnostics.

The digital control and setting options are presented clearly on the front of the XENON 100 SCB. Here, pump capacity and light intensity can be adjusted to current requirements at the touch of a button. Easily understandable displays allow safe control of the settings and thereby simplify daily operation. After approx. 500 hours, the lamp service life display indicates the need to change the lamp. The lamp can of course be changed without the help of a technician.

The XENON 100 SCB is a shining example of the innovative products offered by KARL STORZ – naturally Made in Germany!



Special features:

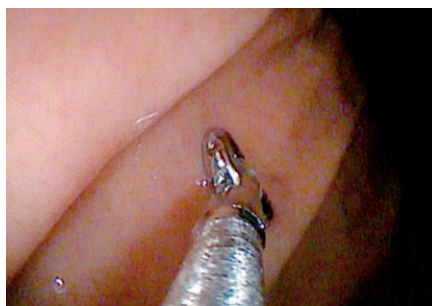
- Excellent light output by the use of a XENON lamp with daylight spectrum
- Individually controllable light intensity
- Optimal light yield
- Integrated insufflation pump with 3 output levels
- Lamp life cycle indicator
- Easy lamp replacement
- Highest safety standards due to CF classification
- Maximum flexibility in the OR through the possibility of complete integration in the KARL STORZ OR1® environment

Flexible Videoendoscopy System in HD Technology

The KARL STORZ GI SILVER SCOPE® series unifies state-of-the-art technology, ergonomics, and durability in one videoscope to open new possibilities. High-tech character combined with an elegant design of the control body, which is equipped with a special 'silk touch' surface allows precise guiding of the endoscopes, even when managing difficult conditions. Excellent grip and light weight ensures fatigue-free, relaxed working – even on long examination days.

The supply plug acts as a central connection between the new GI CCU HD, the light source, and the endoscope. The design of the plug allows the connection of the latest electronics to the endoscope, for quick, precise processing of the control and video signals in real time. The integrated port for the leakage test 'pressure cap system' was newly developed to prevent the possibility of liquid entering the endoscope – yet another plus in terms of durability for the KARL STORZ endoscopes.

The highly flexible supply tube is made of new 'intelligent' plastics and reduces the force applied in examinations to a minimum and protects the material.



KARL STORZ GI SILVER SCOPE® Video Gastrosopes



Special features:

- High resolution (HR)
- 8x magnification for optimal diagnostics
- 2x electronic zoom, adjustable in 4 steps as required
- Fatigue-free working with an ergonomically formed control body
- Excellent deflection
- More effective irrigation of the optics due to a recessed air/water nozzle with directional flow channel



KARL STORZ GI SILVER SCOPE® Video Duodenoscope*

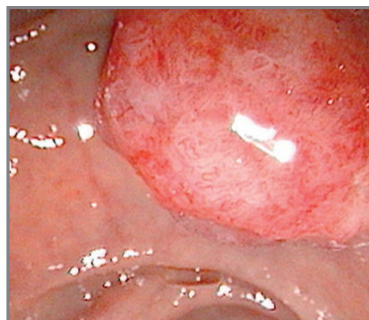
The unique KARL STORZ 'Albarran sterile module' (ASM) guarantees optimal hygienic conditions during ERCP. The patented Albarran module allows the entire Albarran mechanism to be removed from the endoscope and autoclaved; this reliably removes microbe pockets from the sensitive points on the endoscope. The sterile Albarran module is then simply reinserted at the distal end directly prior to the examination. This guarantees maximum hygiene during ERCP and the highest possible safety for the patient.

The KARL STORZ HR minimum range optics is specially tailored to the difficult conditions in ERCP and offers completely new insights into the duodenum and papilla. It ensures that the papilla is always optimally positioned in the image, even when instruments are in use.



Special features:

- High resolution (HR)
- 8x magnification for optimal diagnostics
- 2x electronic zoom, adjustable in 4 steps as required
- 140° wide angle view with 5° retrograde orientation for direct view of the major duodenal papilla
- Fatigue-free working with an ergonomically formed control body
- Easy removable and unique autoclavable Albarran module
- If repairs are required, the module can be dismantled and replaced by hospital staff without technical assistance



KARL STORZ GI SILVER SCOPE® Video Colonoscopes



Special features:

- High resolution (HR)
- 8x magnification for optimal diagnostics
- 2x electronic zoom, adjustable in 4 steps as required
- More effective irrigation of the optics through two recessed air/water nozzles with directional flow channel
- Optimal insufflation due to separate air/water channels
- Fatigue-free working with an ergonomically formed control body
- Excellent deflection
- Available in two working lengths
- Brushable water jet channel on models with a working length of 160 cm



Flexible GI SILVER SCOPE® Video Gastroscopes

Flexible Video Gastroscopes	Sheath Diameter	Working Length	Working Channel Diameter	up	Deflection down	left/right
Slim Gastroscope 13820NKS	5.9 mm	1100 mm	2 mm	210°	100°	120°/120°
Routine Gastroscope 13821NKS	9.3 mm	1100 mm	2.8 mm	210°	100°	120°/120°



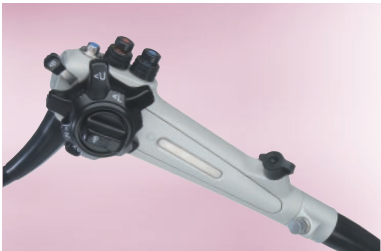
Flexible GI SILVER SCOPE® Video Duodenoscopes with exchangeable, autoclavable Albarran module

Video Duodenoscopes*	Sheath Diameter	Working Length	Working Channel Diameter	up	Deflection down	left/right
Video Duodenoscope 13885NKS (direction of view 5° retro)	12.6 mm	1260 mm	4.2 mm	120°	90°	90°/110°



Flexible GI SILVER SCOPE® Video Colonoscopes

Flexible Video Colonoscopes	Sheath Diameter	Working Length	Working Channel Diameter	up	Deflection down	left/right
Routine Colonoscope 13924NKS	12.9 mm	1400 mm	3.8 mm	180°	180°	160°
Routine Colonoscope 13925NKS with water jet channel	12.9 mm	1600 mm	3.8 mm	180°	180°	160°



* Pending 510(K), not available for sale in the U.S.

Notes



ENDOWORLD®

WWW.KARLSTORZ.COM

KARL STORZ GmbH & Co. KG
Mittelstraße 8, 78532 Tuttlingen, Germany
Postbox 230, 78503 Tuttlingen, Germany
Phone: +49 (0)7461 708-0
Fax: +49 (0)7461 708-105
E-Mail: info@karlstorz.de
www.karlstorz.com

KARL STORZ Endoscopy-America, Inc.
2151 East Grand Avenue
El Segundo, CA 90245-5017, USA
Phone: +1 424 218-8100
Phone toll free: 800 421-0837 (US only)
Fax: +1 424 218-8525
Fax toll free: 800 321-1304 (US only)
E-Mail: info@ksea.com