

SOFIA[®] FLOW PLUS

ASPIRATION CATHETER



EXTREMELY
TRACKABLE

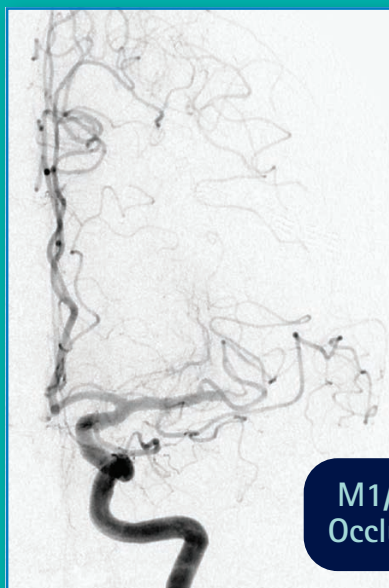
LARGE LUMEN

ASPIRATION
CATHETER

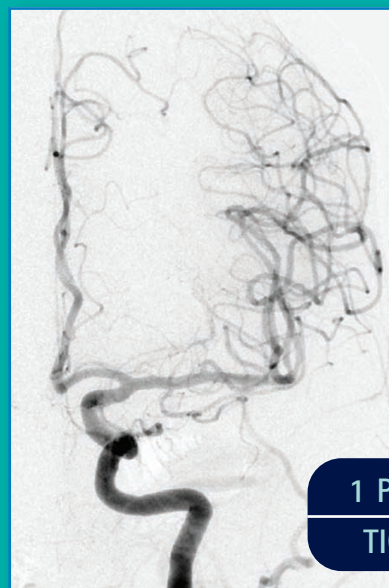
CLINICAL EXPERIENCE

Courtesy of Dr. Mohlenbruch,
Heidelberg University Hospital

Case 1

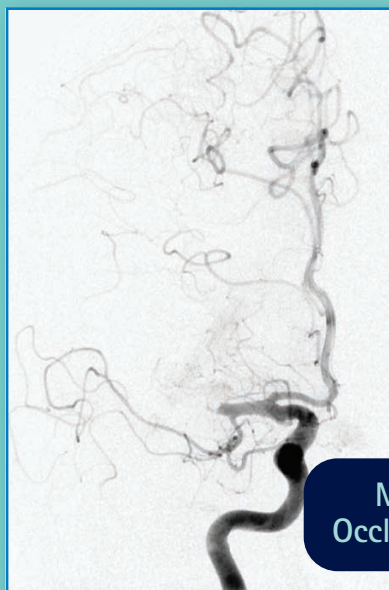


M1/M2
Occlusion

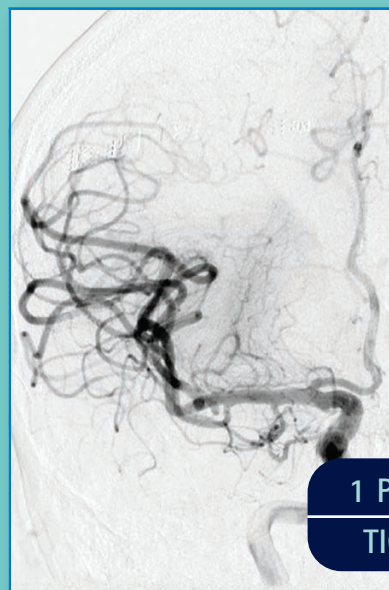


1 PASS
TICI 3

Case 2



M1
Occlusion



1 PASS
TICI 3

Design Features

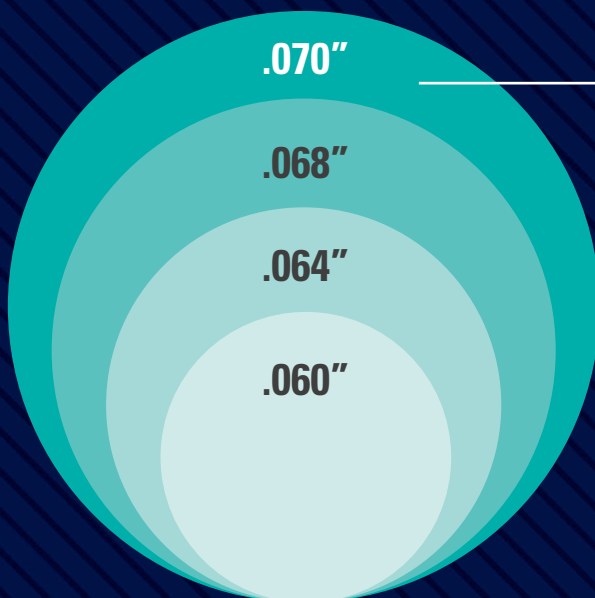
| ATTRIBUTE | BENEFIT |
|--|---|
| 0.070" Lumen | Wide Inner Lumen for Increased Aspiration Ability |
| Exceptionally Soft Distal Tip | Allows Smooth Bypass of the Ophthalmic Artery |
| 125cm Working Length Available | More Microcatheter Length for Retrieval Device Deployment |
| Long 131cm Working Length Available | Ability to Reach Distal Vessels/Occlusions |
| Steam Shapeable Tip and Torqueable Shaft | Ability to Steer Distal Tip Past Difficult Bifurcations |
| Enhanced Kink Resistance | Maintains Distal and Proximal Lumen Integrity |

Combined ASPIRATION POWER

The SOFIA[®] FLOW PLUS Catheter

Offers a large .070" lumen

- ◆ Great aspiration power and flow rate*
- ◆ Ability to capture large clots*



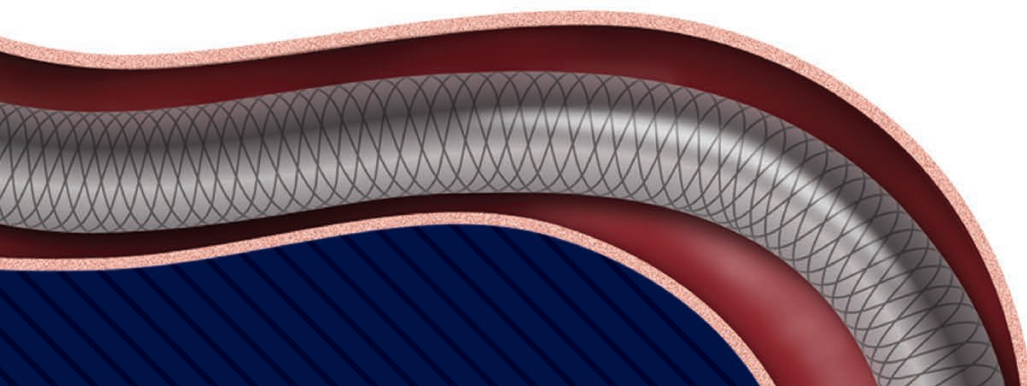
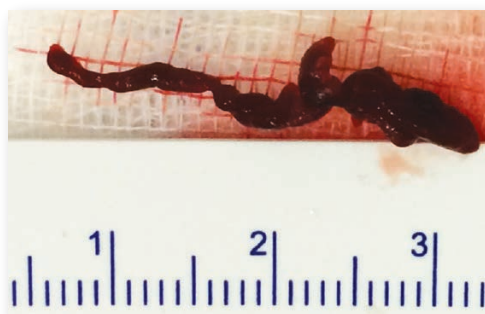
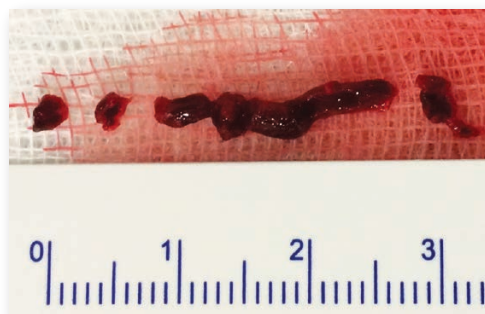
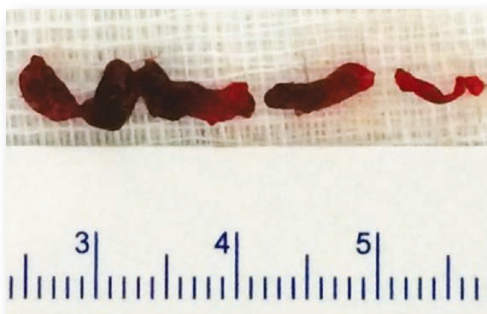
The Sofia[®] Flow Plus Catheter has a large .070" lumen for aspiration

* TR17-095A. Sofia Catheter Comparative Data.

and EXCELLENT TRACKABILITY*

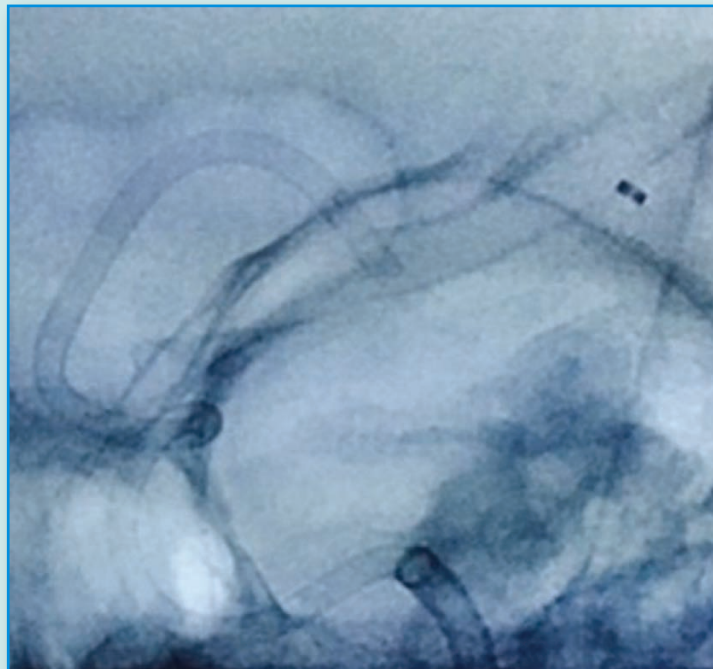


A LARGER LUMEN MAY CAPTURE LARGER CLOTS



EXCELLENT NAVIGATION AND TRACKABILITY

SOFIA® FLOW PLUS Catheter can track to the M2 segment.



Courtesy of Dr. Wenderoth, Liverpool Hospital

SOFIA® FLOW PLUS Catheter can track to M1 occlusions without crossing the clot with a guidewire or microcatheter.



Courtesy of Dr. Mohlenbruch, Heidelberg University Hospital

TORQUEABILITY

Braid overlay provides excellent torque response to bypass difficult bifurcations

1:1 PUSHABILITY

Hybrid braid and coil reinforcement provides superior push response

KINK RESISTANCE

Track through tortuous distal bends without kinking

SOFIA® FLOW PLUS

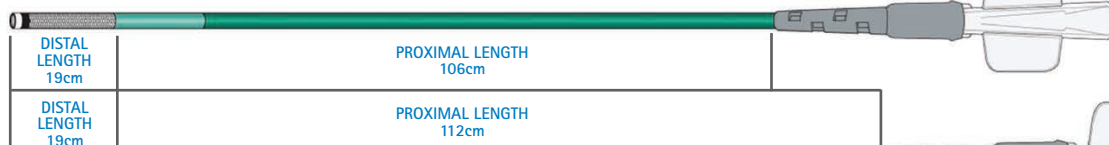
ASPIRATION CATHETER

LARGE INNER DIAMETER FOR IMPROVED ASPIRATION POWER
AND ENHANCED SOFTNESS FOR SUPERIOR DISTAL NAVIGATION

| PRODUCT CODE | CATHETER SIZE | PROXIMAL OD | DISTAL OD | ID | WORKING LENGTH | DISTAL LENGTH | PROXIMAL LENGTH | DISTAL TIP SHAPE |
|--------------|---------------|-----------------|-----------------|--------|----------------|---------------|-----------------|------------------|
| DA6125ST | 6F | 0.0825" / 2.1mm | 0.0815" / 2.1mm | 0.070" | 125cm | 19cm | 106cm | Straight |
| DA6131ST | 6F | 0.0825" / 2.1mm | 0.0815" / 2.1mm | 0.070" | 131cm | 19cm | 112cm | Straight |

One unit per box, includes shaping mandrel and introducer sheath

6F SOFIA® FLOW PLUS 125cm



6F SOFIA® FLOW PLUS 131cm

| ASPIRATION ACCESSORIES | PRODUCT CODE | DESCRIPTION |
|-------------------------------------|--------------|---|
| Gomco® 405 Aspiration Pump | 01-12-4005 | Includes (non-sterile): 1 ea. Aspiration Pump 115V/60Hz, 1 ea. 1500 ml disposable canister, 1 ea. disposable 15" clear PVC tubing, 3 ea. disposable hydrophobic bacterial filters |
| Canister & Accessory Kit | 20-08-0009 | Includes (non-sterile): 1 ea. 1500 ml disposable canister, 1 ea. disposable 15" clear PVC tubing, and 1 ea. disposable hydrophobic bacteria filter |
| Tubing Kit | MVTK110 | Includes (sterile): 1 ea. Proximal tubing, 1-way stopcock and distal tubing |



SOFIA® FLOW PLUS Aspiration Catheter is compatible with FDA cleared stentriever devices

INDICATIONS FOR USE: The SOFIA® Flow Plus Aspiration Catheter with the Gomco® 405 Aspiration Pump and MicroVent® Tubing Kit is intended for use in the revascularization of patients with acute ischemic stroke secondary to intracranial large vessel occlusive disease (within the internal carotid, middle cerebral – M1 and M2 segments, basilar, and vertebral arteries) within 8 hours of symptom onset. Patients who are ineligible for intravenous tissue plasminogen activator (IV t-PA) or who fail IV t-PA therapy are candidates for treatment.

RX Only: Federal (USA) law restricts this device to sale by or on the order of a physician. This device should be used only by physicians trained in percutaneous, intravascular techniques and procedures at medical facilities with the appropriate fluoroscopy equipment. The SOFIA® FLOW PLUS Catheter should only be used by physicians who have received appropriate training for the device.



microvention.com

MicroVent® Worldwide
Innovation Center
35 Enterprise
Aliso Viejo, CA 92656
PH 714.247.8000
PH 1.800.990.8368

MICROVENTION and SOFIA are registered trademarks of MicroVent®, Inc.
Refer to Instructions for Use, contraindications and warnings for additional information.
© 2018 MicroVent®, Inc. MM535 Rev. A V2 06/18