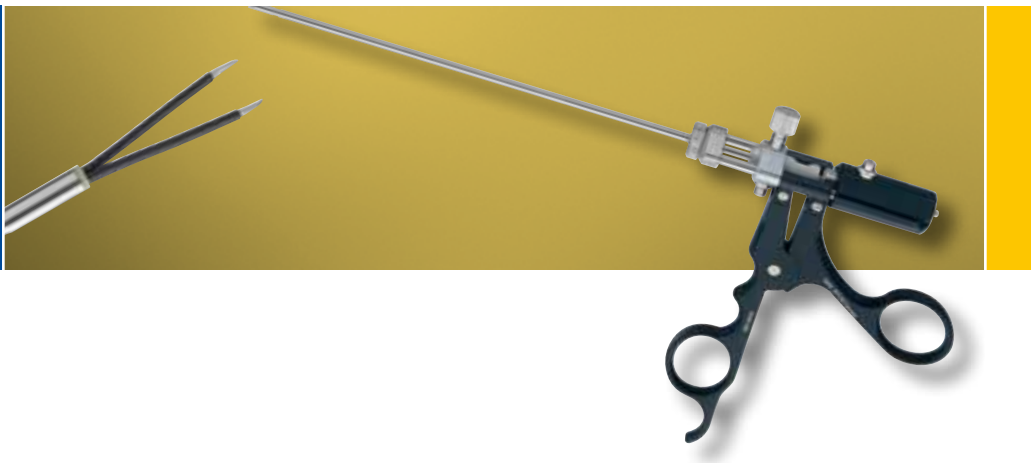


# The KASSAM Range of Bipolar Forceps

for Bleeding Management  
Especially designed for Brain and Skull Base Surgery



## The KASSAM Range of Bipolar Forceps

Maintaining good hemostasis at all times is a constant concern during brain and skull base surgeries. Constant visualization of the operative field is even more crucial during endoscopic procedures. As surgical access to neurological lesions is minimized, the design of any instrument must be optimized for safety and ergonomics.

To meet these needs, we have developed a new range of exchangeable bipolar forceps.

In this brochure we will outline and detail the features and benefits of each of the designs.

AMIN B. KASSAM, MD  
University of Ottawa, Division of Neurosurgery

CARL H. SNYDERMAN, MD  
University of Pittsburgh Medical Center, Department of Otolaryngology



**Fig. 1:**

The dissecting surgeon (DS) uses a binocular approach with the endoscope (E) in the patient's left nostril. Here, a suction tube (S) is in the left nostril and a TAKE-APART® KASSAM Bipolar Forceps (BP) is introduced in the right nostril.

## The KASSAM Range of Bipolar Forceps

### Field of application:

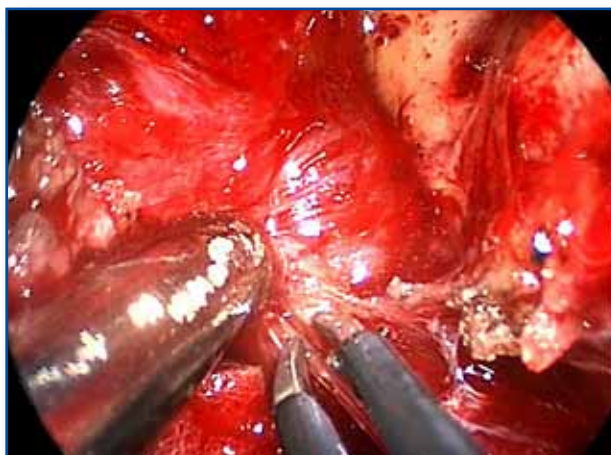
- Microscopic Brain and Skull Base Surgery
- Endoscopic Pituitary Surgery
- Endoscopic Expanded Endonasal Surgery
- Endoscopic Transnasal Brain Surgery
- Endoscopic Ventricular Surgery (Endoport)

AMIN B. KASSAM, MD

University of Ottawa, Division of Neurosurgery

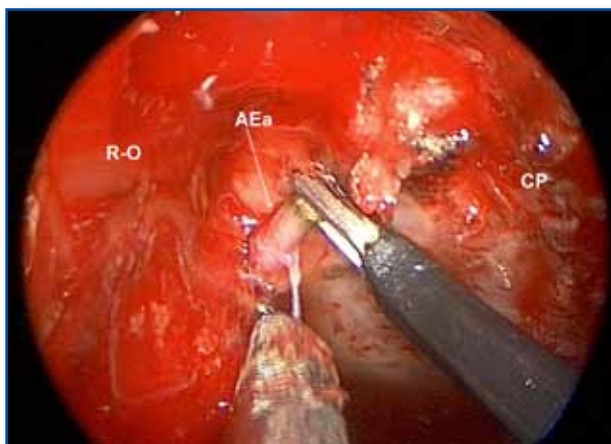
CARL H. SNYDERMAN, MD

University of Pittsburgh Medical Center, Department of Otolaryngology



**Fig. 2:**

Intra-operative photograph demonstrating the TAKE APART® KASSAM Bipolar Forceps with arrow tips, being used to cauterize a small vessel. The arrow tip design allows precise fine cautery without thermal damage to adjacent structures



**Fig. 3:**

The anterior ethmoidal arteries (AEa) can be cauterized with TAKE-APART® KASSAM Bipolar Forceps. Right orbit (R-O), cribriform plate (CP).

# The TAKE-APART® KASSAM Bipolar Forceps

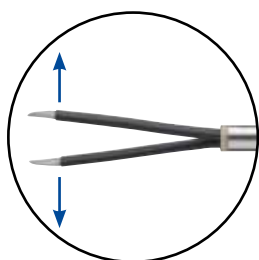
## Features and Benefits

### Features and Benefits

The new TAKE-APART® KASSAM Bipolar Forceps has been redesigned to improve visualization of the instrument and enhance its function.

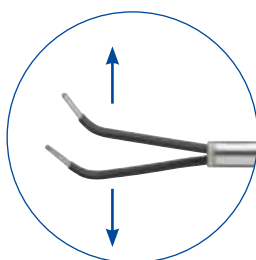
- **Various tip designs:**

Straight with pointed tips

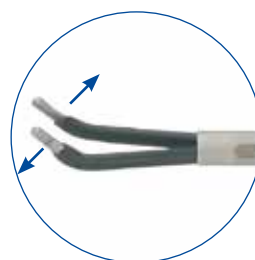


Arrow Tip

Angled 45° upwards with horizontal and vertical closing



Sidewinder



Uptoed

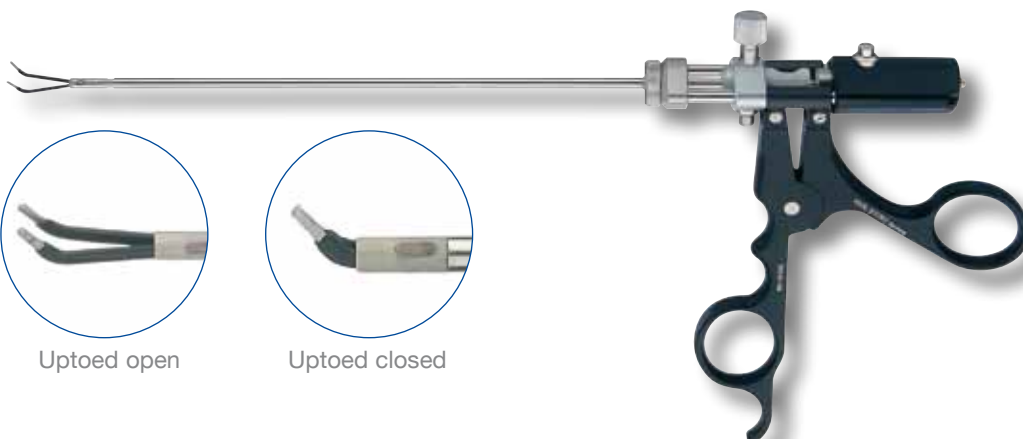
- **Low-profile dimensions**

allows access to deep vessels without interfering with other instruments

- 3.4 mm outer diameter
- 20 cm long shaft

- **New double-shaft design**

with an inner sheath and an outer sheath: This means that the tips of the forceps don't pull back while closing them. Instead, the inner sheath moves and the tips stay exactly at the same point – this allows for more exact and safer coagulation.

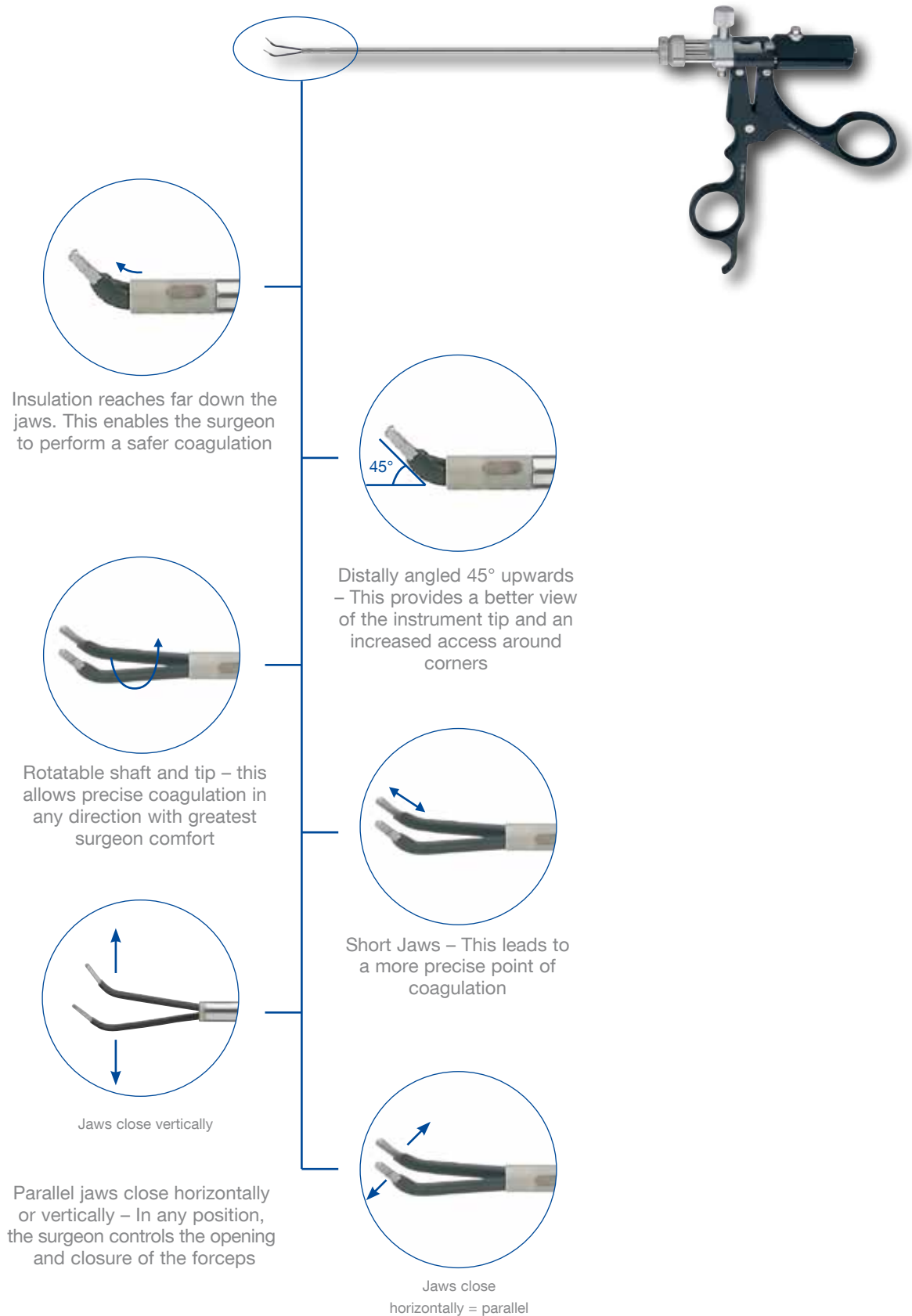


Uptoed open

Uptoed closed

# The TAKE-APART® KASSAM Bipolar Forceps

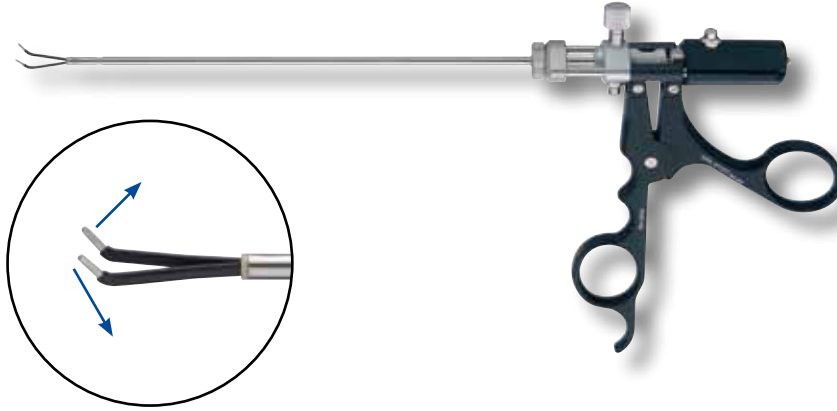
## Features and Benefits



# The TAKE-APART® KASSAM Bipolar Forceps

## Product Description

### KASSAM Uptoed Bipolar – 1 mm



28164 BDM **TAKE-APART® Bipolar Forceps**, width 1 mm, delicate jaws, distally angled 45°, horizontal closing, outer diameter 3.4 mm, working length 20 cm,

including:

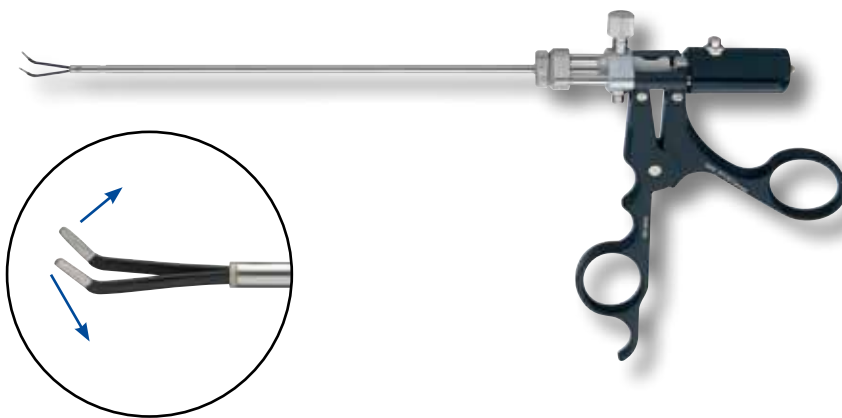
**Handle**

**Outer Tube**

**Inner Tube**

**Bipolar Insert**

### KASSAM Uptoed Bipolar – 2 mm



28164 BDD **TAKE-APART® Bipolar Forceps**, width 2 mm, distally angled 45°, horizontal closing, outer diameter 3.4 mm, working length 20 cm,

including:

**Handle**

**Outer Tube**

**Inner Tube**

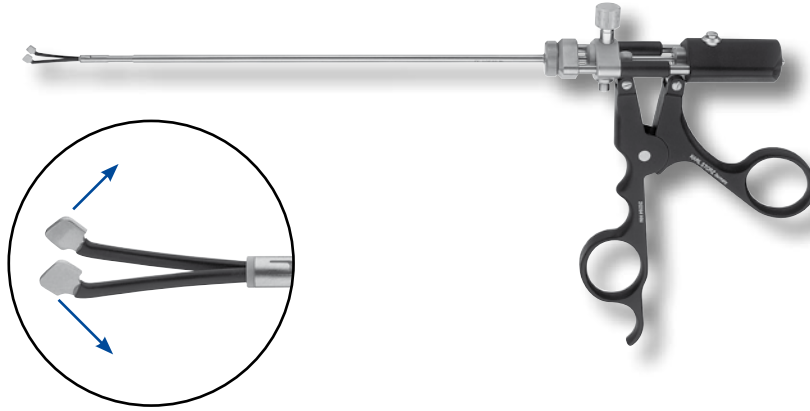
**Bipolar Insert**



## The TAKE-APART® KASSAM Bipolar Forceps

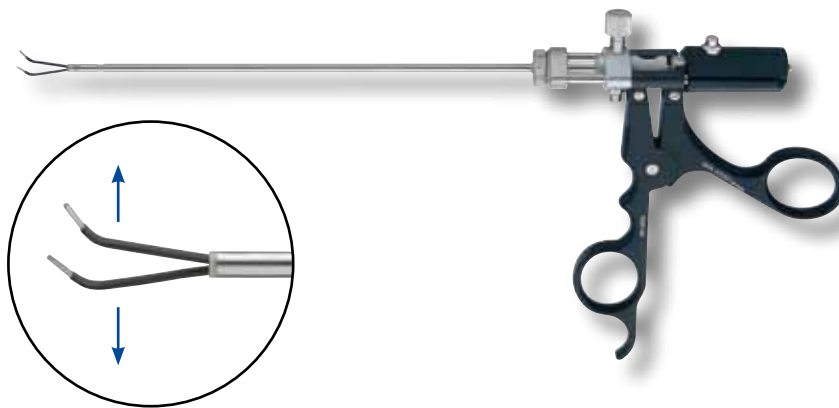
### Product Description

#### KASSAM Uptoed Bipolar – 4 mm



28164 BDK **TAKE-APART® Bipolar Forceps**, width 4 mm, distally angled 45°, horizontal closing, outer diameter 3.4 mm, working length 20 cm, including:  
**Handle**  
**Outer Tube**  
**Inner Tube**  
**Bipolar Insert**

#### KASSAM Sidewinder Bipolar – 1 mm

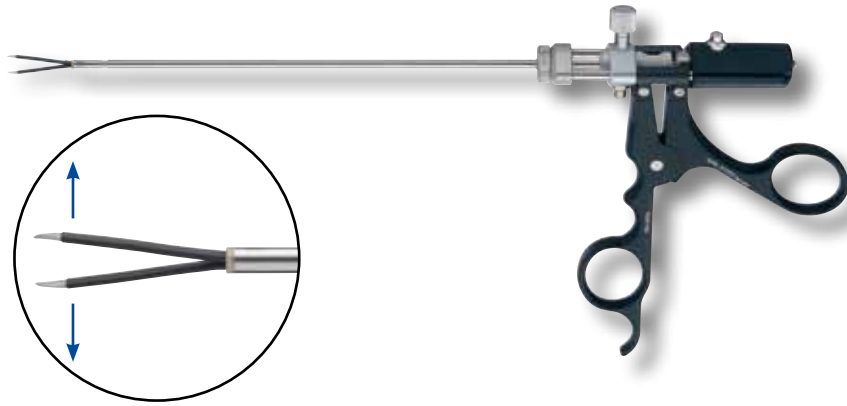


28164 BDL **TAKE-APART® Bipolar Forceps**, width 1 mm, delicate jaws, distally angled 45°, vertical closing, outer diameter 3.4 mm, working length 20 cm, including:  
**Handle**  
**Outer Tube**  
**Inner Tube**  
**Bipolar Insert**

## The TAKE-APART® KASSAM Bipolar Forceps

### Product Description

#### KASSAM Arrow Tip, Fine Bipolar – 3 mm



28164 BDG **TAKE-APART® Bipolar Forceps**,  
straightforward, sharp, coaxial closing,  
size 3.4 mm, working length 20 cm,  
including:  
**Handle**  
**Outer Tube**  
**Inner Tube**  
**Bipolar Insert**



## Bipolar High Frequency Cables

For the TAKE-APART® KASSAM Bipolar Forceps



26176 LE

**Bipolar High Frequency Cable**, for KARL STORZ coagulator 26021 B/C/D, 860021 B/C/D, 27810 B/C/D, 28810 B/C/D KARL STORZ AUTOCON® II range type B 50/200/350 and Erbe coagulator, T and ICC series, length 300 cm



26176 L

**Bipolar High Frequency Cable**, with 2 x 4 mm banana-plug for KARL STORZ coagulator 26020 XA/XB, length 300 cm



26176 LA

**Bipolar High Frequency Cable**, with 2 x 4 mm banana-plug for KARL STORZ AUTOCON® II range type C 50/200/400, KARL STORZ coagulators XA/XB, Bircher, Bovie, Keymend, Mallis, Valleylab, Neomed and Bard, length 300 cm



26176 LM

**Bipolar High Frequency Cable**, for KARL STORZ AUTOCON® II range type A 50/200/400, Martin, Berchtold and Aesculap coagulators (latest models), length 300 cm



26176 LV

**Bipolar High Frequency Cable**, for KARL STORZ AUTOCON® II range type C 50/200/400, Valleylab and Bovie coagulators, length 300 cm



[WWW.KARLSTORZ.COM](http://WWW.KARLSTORZ.COM)

ENDO WORLD®

KARL STORZ GmbH & Co. KG  
Mittelstraße 8, 78532 Tuttlingen, Germany  
Postbox 230, 78503 Tuttlingen, Germany  
Phone: +49 (0)7461 708-0  
Fax: +49 (0)7461 708-105  
E-Mail: [vet@karlstorz.de](mailto:vet@karlstorz.de)  
[www.karlstorz.com](http://www.karlstorz.com)

KARL STORZ Endoscopy-America, Inc.  
2151 E. Grand Avenue  
El Segundo, CA 90245-5017, USA  
Phone: +1 424 218-8100  
Fax: +1 424 218-8525  
E-Mail: [info@ksea.com](mailto:info@ksea.com)

**STORZ**  
KARL STORZ — ENDOSKOPE  
THE DIAMOND STANDARD