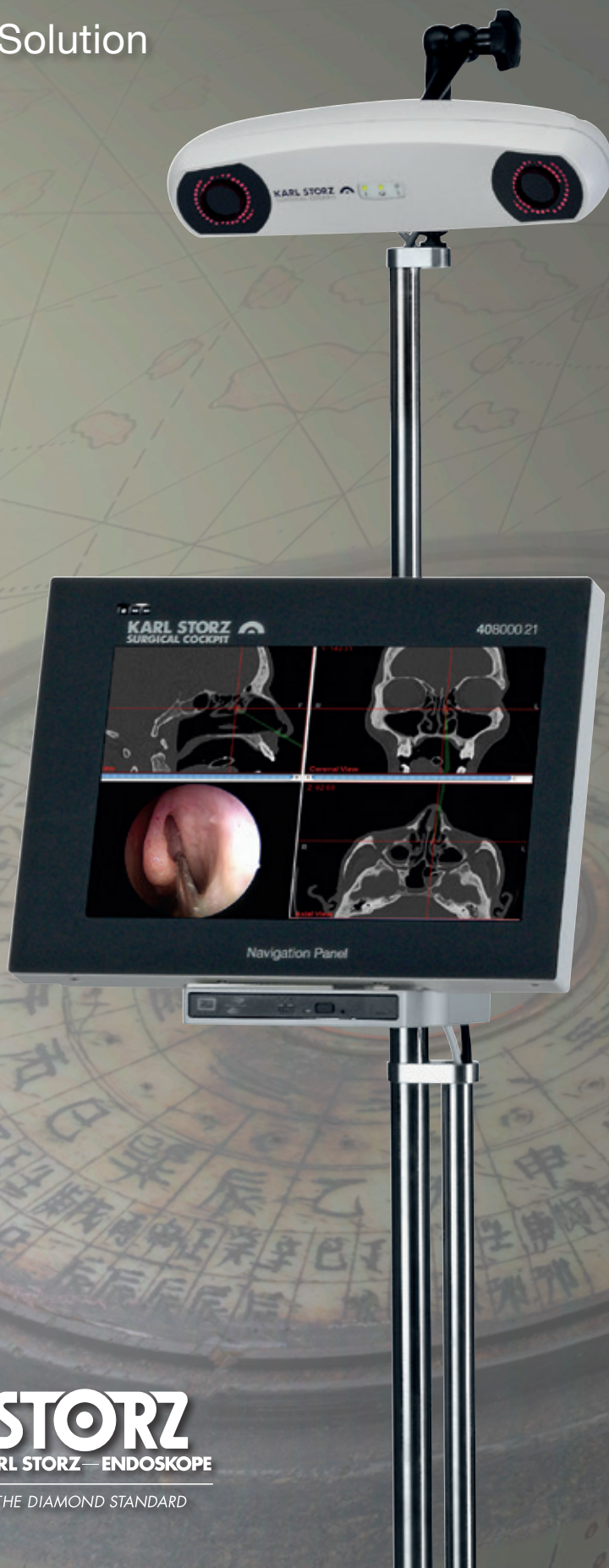


# KARL STORZ NAV1 PICO

The Mobile Navigation Solution



**STORZ**  
KARL STORZ — ENDOSKOPE  
THE DIAMOND STANDARD

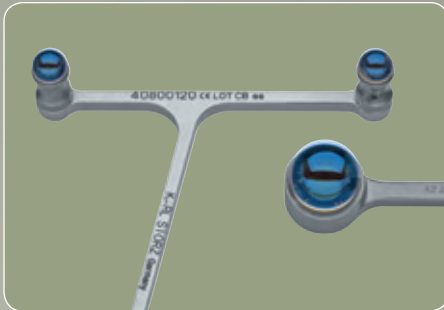




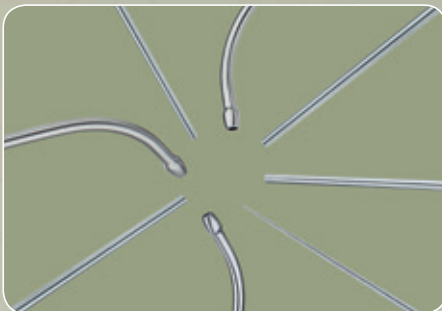




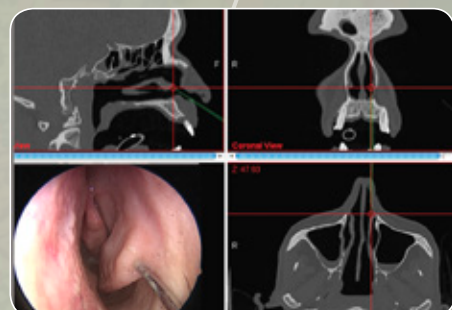
Small dimensions and low weight  
for greater mobility



Autoclavable and reusable  
navigation instruments and  
trackers thanks to patented glass  
marker spheres



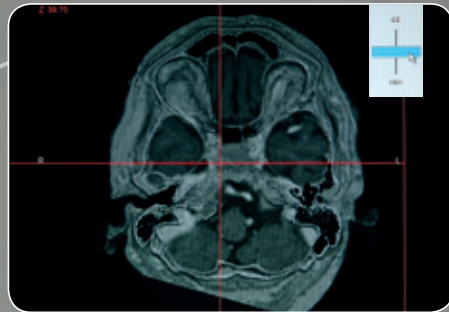
Navigated suctions and  
frontal sinus seeker



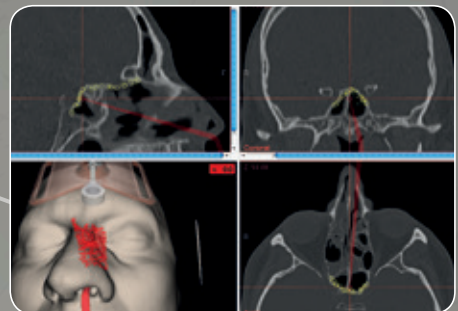
Integration of  
endoscopic video images



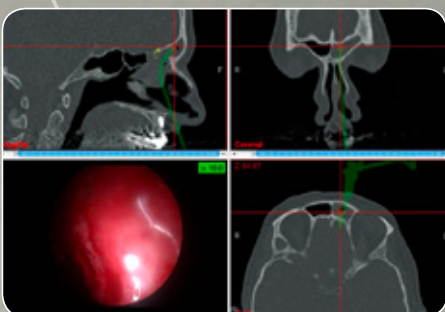
Less space required in the OR due to easy integration into equipment carts



Automatic CT/MR fusion of patient image data for enhanced information content








Planning of risk structures with intraoperative Distance Control




Display of real-time instrument geometry in radiological patient image data

# KARL STORZ NAV1 PICO Accessory Guide

Part #	NAV1 PICO	
40800001	<b>NAV1 PICO</b> , consisting of: 1x Navigation Panel 1x Optical Mouse 1x Navigation Camera 1x Electronic Box 1x Docking Adaptor 1x NAV1 PICO Mobile Stand 1x Data Cable 1x Video Cable 1x Navigation Camera Cable 250 1x Headband for Navigation, for single use 1x Patient Tracker III 1x Case Navigation 1x Navigation Probe 1x Mains Cord	

Part #	SINGLE COMPONENTS OF THE SYSTEM	
40800021	<b>Navigation Panel for NAV1 PICO</b> , to use with Navigation Unit 40800001 consisting of: Navigation Panel with Pen, 12.1" XGA Touch Screen, 500 GB Hard drive, Lithium Ion-battery 3600 mAh ENT Navigation software (installed), Dimensions: 283 x 222 x 22 mm	 
40800028	<b>Optical Mouse for NAV1 PICO</b>	
40800030	<b>Navigation Camera for NAV1 PICO</b> , to use with Navigation Unit 40800001, Power supply: 100 – 240 VAC 50/60 Hz oder 24V, dimensions: 273 x 69 x 69 mm	
40800040	<b>Electronic box for NAV1 PICO</b> , to use with Navigation Unit 40800001 Power supply: 100 – 240 VAC 50/60 Hz	
40800051	<b>Docking Adaptor for Navigation Panel 40800021</b> , fixation screw for docking adaptor, dimensions: 62 x 62 x max. 210 mm CD-RW/DVD-ROM drive for NAV1 pico, with metal case, dimensions: 195 x 177 x 14 mm	
40800060	<b>Mobile Stand for NAV1 PICO</b> , consisting of: telescopic tube, fixable joint for assembly of camera 40800030, connection place for docking adapter 40800050	
40800072	<b>Data Cable for NAV1 PICO</b> , for connecting Navigation Panel 40800021 with the Electronic box 40800040, cable length 140 cm, color code: white	
40800074	<b>Video Cable for NAV1 PICO</b> , for connecting of Navigation Panel 40800021 with the Electronic box 40800040, cable length 140 cm, color code: blue	
40800076	<b>Navigation Camera cable for NAV1 PICO</b> , for connecting of Navigation Camera 40800030 with the Electronic box 40800040, cable length 250 cm, color code: grey	
40800088	<b>Patient Tracker III</b> , with verification adaptor, for KARL STORZ NAV1 PICO, autoclavable, with glass-spheres incorporated, with fixation screw, dimensions: 80 x 60 x 12 mm, for use with Headband 40800080	
40800090	<b>Case Navigation, for NAV1 PICO</b> , Assembling utilities, Instruction manual, dimensions: 1220 x 420 x 300 mm	 
40800110	<b>Probe for NAV1 PICO</b> , Navigation Probe, to use with Navigation Unit 40800001, with fixed glass-spheres, autoclavable, dimensions: 295 x 15 x 30 mm	










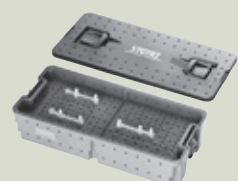
Part #	HEADBAND	
40800200	<b>Headband Set for Navigation</b> , single use, with plastic holder and headband, package of 10, for use with NAV1 PICO or NAV1 OPTICAL	
40800083	<b>Headband for Navigation with plastic holder</b> , for single use	

Part #	NAV1 PICO COVERS	
ET54-2908-NP	<b>Cover for Navigation Camera 40800030</b>	 
ET54-3526-NP	<b>Display Cover for Navigation Panel 40800021</b>	





# KARL STORZ NAV1 PICO Accessory Guide

Part #	TRAYS, NAVIGATED INSTRUMENTS AND TRACKERS	
40800140	<b>Optical Navigated Suction Tube</b> , straight, for right-handed use, with cut-off hole, 9 Fr., working length 9 cm, total length 16 cm, for use with NAV1 PICO or NAV1 OPTICAL	
40800140L	<b>Navigated Suction Tube for NAV1 PICO</b> , knee curved, to use with the tool tracker 40800120, autoclavable, Working length 90 mm, dimensions: 170 x 30 x 10 mm	
40800140R	<b>Navigated Suction Tube for NAV1 PICO</b> , knee curved, to use with the tool tracker 40800120, autoclavable, Working length 90 mm, dimensions: 170 x 30 x 10 mm	
40800150	<b>Optical Navigated Suction Tube</b> , curved upwards, for right-handed use, with cut-off hole, outer diameter 3 mm, length 16.5 cm, for use with instrument tracker and NAV1 PICO or NAV1 OPTICAL	
4080060	<b>v. Eicken /Maxillary Navigated Suction Tube</b> , downwards left, for right and left hand, OD: 3mm, length 12.5 cm <b>NEW</b>	
40800160 RM	<b>Optical Navigated Suction Tube</b> , curved to right, for left and right-handed use, with cut-off hole, outer diameter 3 mm, length 16.5 cm, for use with NAV1 PICO or NAV1 OPTICAL	
40800160 LM	<b>Optical Navigated Suction Tube</b> , curved to left, for left and right-handed use, with cut-off hole, outer diameter 3 mm, length 16.5 cm, for use with NAV1 PICO or NAV1 OPTICAL	
40800111	<b>Optical Navigated Frontal Sinus Probe</b> , for use with Optical Tool Tacker and NAV1 PICO or NAV1 OPTICAL	
40800120	<b>Optical Tool Tracker</b> , for optically navigated instruments, with 3 fix-mounted glass spheres, autoclavable, dimensions: 70 x 50 x 14 mm, for use with NAV1 PICO or NAV1 OPTICAL	
39360 NAV	<b>Navigation sterilization two level tray includes:</b> 1x Silicone mat for top level tray 1x Silicone mat for bottom level tray 1x Small accessory box, 6.32" X 2.86" 1x AT lateral tie down straps 1x AP silicone fixation post Can order 39360 AR removal tool for 39360 AP post	
39360NAVB	<b>Small Accessory Box</b> , 6.32" X 2.86"	
39360NAVM1	<b>Silicone Mat</b> , for top level tray	
39360NAVM2	<b>Silicone Mat</b> , for bottom level tray	
39360AT	<b>Lateral Tie Down Straps</b>	
39360AP	<b>Silicone Fixation Post</b>	
39360AR	<b>Removal Tool for 39360AP post</b>	

Part #	CLEANING PRODUCTS	
27652/3	<b>Cleaning Brush</b>	
11275CS/10	<b>Cleaning Brush</b> , Short	
11275CL2/10	<b>Cleaning Brush</b> , Tapered	
27650B/3	<b>Cleaning Brush</b> , Medium	



...evolution continues

**STORZ**  
**KARL STORZ—ENDOSKOPE**

*THE DIAMOND STANDARD*

KARL STORZ GmbH & Co. KG  
Mittelstraße 8, 78532 Tuttlingen, Germany  
Postbox 230, 78503 Tuttlingen, Germany  
Phone: +49 (0)7461 708-0  
Fax: +49 (0)7461 708-105  
E-Mail: [info@karlstorz.com](mailto:info@karlstorz.com)  
[www.karlstorz.com](http://www.karlstorz.com)

KARL STORZ Endoscopy-America, Inc.  
2151 East Grand Avenue  
El Segundo, CA 90245-5017, USA  
Phone: +1 424 218-8100  
Phone toll free: 800 421-0837 (US only)  
Fax: +1 424 218-8525  
Fax toll free: 800 321-1304 (US only)  
E-Mail: [communications@karlstorz.com](mailto:communications@karlstorz.com)